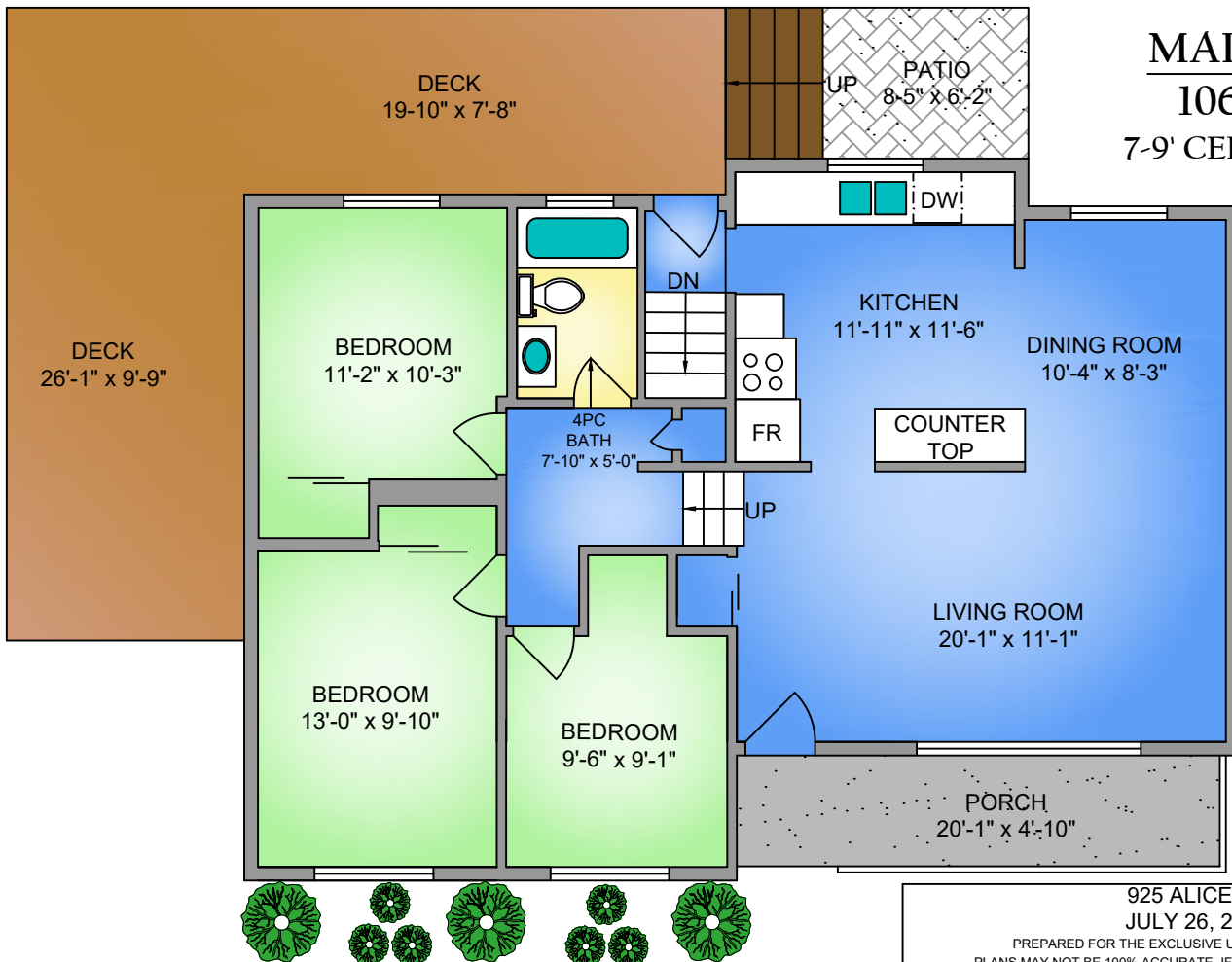
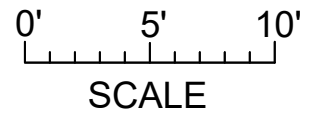
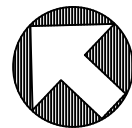
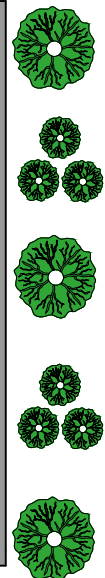


LOWER FLOOR
513 SQ. FT.
6-6' CEILING HEIGHT

NORTH



MAIN FLOOR
1063 SQ. FT.
7-9' CEILING HEIGHT



925 ALICE ST
JULY 26, 2019
PREPARED FOR THE EXCLUSIVE USE OF THE B & B TEAM
PLANS MAY NOT BE 100% ACCURATE, IF CRITICAL BUYER TO VERIFY.

FLOOR	AREA (SQ. FT.)		
	FINISHED	UNFINISHED	DECK / PATIO
MAIN	1063	-	579
LOWER	513	476	-
TOTAL	1576	476	579